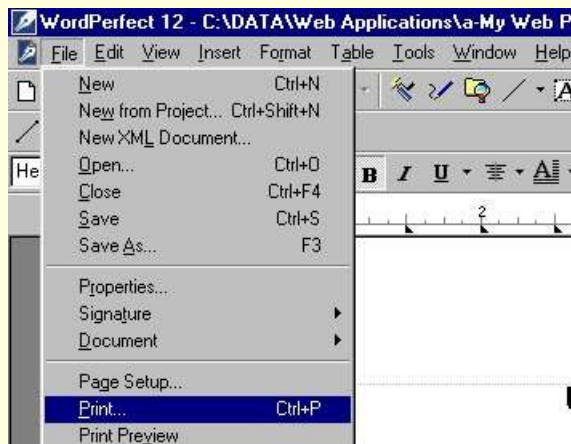


For help with attaching and sending documents to the Congregational Clerk, exit this page by pressing your browser's "Back-arrow". Then select either link "Attaching Documents in Outlook" or "Attaching Documents in Yahoo!" for additional help.

Printing Your Documents

Press your browser "Print" button to print the document (Internet Explorer shown).



Netscape Note: Netscape does not attempt to open rich text format ("rtf") documents. Instead, Netscape opens your word processing program (Corel WordPerfect shown) to display, print, or save.



Press the "Print" button, or select the menu commands: "File > Print"